

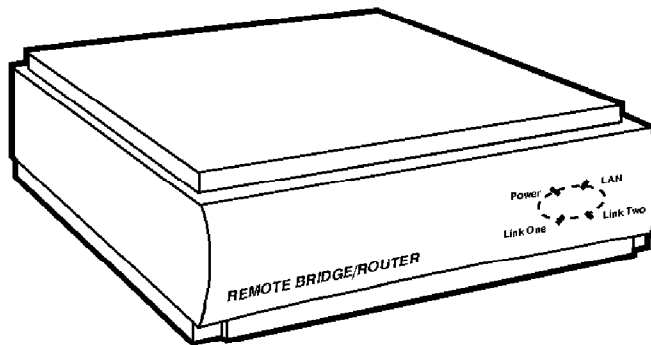


BLACK BOX®

©Copyright 1996. All rights reserved
Black Box Corporation.

The Source for Connectivity®

Remote Bridge/Routers



The ideal WAN:
fast, secure, and—
best of all—
cost-effective.

It's easy to make the most of the WAN bandwidth you're paying for. Just start with our Remote Bridge Router.

Key Features

Bridge Features:

- ▶ Instant connection to your LAN and to the WAN to get your internetwork up and running.
- ▶ Easy to use intuitive menu-based management system.
- ▶ Bandwidth-on-Demand squeezes the most out of expensive wide-area bandwidth.
- ▶ Activates backup link automatically when the main link fails, protecting critical network resources.
- ▶ LAN bypass enables data to travel the most direct route, preventing congestion of intermediate LANs.

Router Features:

- ▶ Supports the two most popular routing protocols: IP and Novell® IPX™.
- ▶ Transparent bridging enables other protocols to use the WAN.
- ▶ Uses the Routing Information Protocol (RIP) for communications with other IP and IPX routers in the internetwork.

WAN Management

Getting the most from an expensive wide-area bandwidth is crucial to a well-managed internetwork. The Remote Bridge/Router platform makes your WAN cost-effective and secure. And these units can be equipped with Frame Relay or ISDN.

Technically Speaking

Data Compression gets the most out of a fixed amount of wide-area bandwidth. The data-compression option increases the amount of data sent over the wide-area link(s). The compression rate depends on the type of file and protocols, but 600% link efficiency is typical.

Time-of-Day Activation minimizes network facility costs. Each link can be individually set to activate or deactivate at specific times of the day. For example, you can bring up the second dialup link to handle peak traffic times. This feature is perfect for dialup transfers from any number of sites to a central location, and for time-based server backups.

Dialup Link Recovery. If the primary communications link fails, the recovery feature brings up the second link automatically. All data will then be routed over

switched (digital or analog) network services to protect the network connection. If you prefer, data can be sent to a disaster recovery site.

Activation on Saturation. When traffic loads surpass an operator-defined threshold, a second link on standby mode can be automatically raised to carry the additional traffic. When the traffic loads drop below the threshold, the second link returns to standby mode.

Intelligent Wide-Area Routing. The Remote Bridge/Router ensures that data takes the shortest path to the destination. Dual links enable the Remote Bridge/Router to support wide-area networking applications—closed-loop topologies, tail circuiting with bypass capabilities, and other multipoint topologies.

Flash Memory for System Code Updates. If you need to upgrade your Remote Bridge/Routers network, you can. Flash Memory allows an in-band network download, via the trivial file transfer protocol (TFTP), from a central location.

Terrestrial and Satellite Support. Data is often routed through satellite links for international internetworks. Delays may result with the standard Modulo 8 acknowledgment scheme. To

solve this, the Remote Bridge/Router platform offers Modulo 128 acknowledgment, which allows more outstanding packets without triggering unnecessary re-transmissions.

Network Management

The Remote Bridge/Router offers three powerful methods of management.

Simple Management Network Protocol (SNMP). With SNMP your network can access the SNMP MIBs supported by the Bridge/Router.

In-Band TELNET Access. Access to the password-protected console of any TELNET™ host.

Out-of-Band Management. Supported through the RS-232 console port at the rear of the Bridge/Router.

Traffic Filtering

To make effective use of wide-area resources, filtering decisions can be made to restrict certain traffic from entering the WAN, or reaching a specific LAN. Filters can make your network more secure by restricting access to certain resources. Any of the following filtering types can be applied simultaneously.

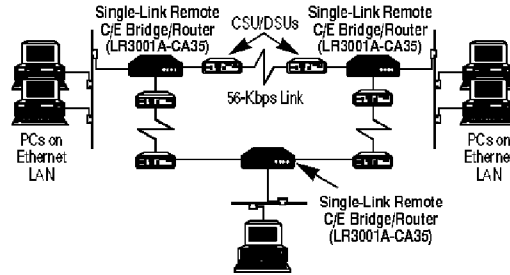
Address Filtering. Filtering can be done by source and/or destination MAC addresses.

(continued on page 2)

Doc# 12300

You choose the right balance between efficiency and security.

Multipoint with least-cost routing



Technically Speaking

(continued from page 1)

These filters are used to prevent stations with the specified MAC addresses from getting access to a station on another LAN.

Protocol Filtering. Filtering a specific protocol type (or combination of types) limits traffic that has no need of going across the WAN from doing so. For example, AppleTalk® protocol might be needed only locally. A protocol filter prevents packets of

protocol from leaving the LAN.

Custom Filtering. Address and Protocol filters act on Layer 2 information found first in the Ethernet frame. The next information set in the frame consists of Layer 3 information. You can specify filters based on higher-level Layer 3 information with or without reference to Layer 2 information.

Specifications

Speed — Aggregate for WAN: up to 512 Kbps; Filtering rate: 17,500 frames/second

Protocol — Protocol-independent (MAC-layer bridging) management: SNMP terminal access

Indicators — (4): Power, LAN, Link 1, Link 2

Connectors — WAN: V.35: (1) DB25; LAN: Standard, (1) AUI, DB15; Thin, (1) BNC; 10BASE-T, (1) RJ-45.

Power — 110/230 VAC, 60/50 Hz

Size — 2.5"H x 8"W x 14.5"D (6.4 x 20.3 x 37 cm)

Weight — 11 lb. (5 kg)

For these and other components...

Call our expert Technical Support Staff for all your LAN needs. They'll help you find the best equipment for your application.

Ordering Information

This information will help you place your order quickly.

| PRODUCT NAME | ORDER CODE |
|--|-----------------|
| Remote Bridge/Router, V.35—Single Link | |
| AUI..... | LR3001A-A35-R2 |
| BNC..... | LR3001A-B35-R2 |
| 10BASE-T..... | LR3001A-T35-R2 |
| Remote Bridge/Router, V.35—Double Link | |
| AUI..... | LR3002A-A35-R2 |
| BNC..... | LR3002A-B35-R2 |
| 10BASE-T..... | LR3002A-T35-R2 |
| Remote C/E Bridge/Router, V.35—Single Link | |
| AUI..... | LR3001A-CA35-R2 |
| BNC..... | LR3001A-CB35-R2 |
| 10BASE-T..... | LR3001A-CT35-R2 |
| Remote C/E Bridge/Router, V.35—Single Link | |
| AUI..... | LR3002A-CA35-R2 |
| BNC..... | LR3002A-CB35-R2 |
| 10BASE-T..... | LR3002A-CT35-R2 |